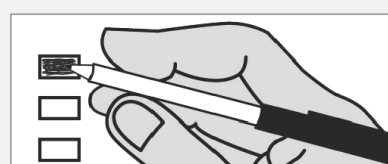


Sample Ballot
Primary Kitsap County, Washington
August 05, 2014

This ballot contains all contests that will appear on the August 5, 2014 Primary ballot. Only the ballot issues that apply to the precinct where you are registered to vote will appear on your ballot.

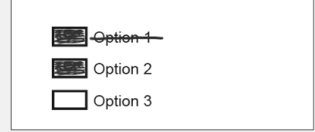
How to vote this ballot



Use a dark blue or black ink pen to fill in the box to the left of your choice. Do not use pencil.

Mark one choice in each contest. If you mark more than one choice, no votes will be counted for that contest.

If you make a mistake



Draw a line through the entire measure response or candidate's name. Then you may make another choice.

To vote for a candidate not listed on the ballot, write in the name in the space provided and fill in the box.

Ballot information is available at: www.kitsapgov.com. Click the Elections icon.

For a list of the people and organizations that donated to state and local candidates and ballot measure campaigns, visit www.pdc.wa.gov.

READ: Each candidate for partisan office may state a political party that he or she prefers. A candidate's preference does not imply that the candidate is nominated or endorsed by the party, or that the party approves of or associates with that candidate.

Federal Partisan Office

Congressional District 6
U.S. Representative
 2-year term
 Derek Kilmer
 (Prefers Democratic Party)
 W. (Greybeard) McPherson
 (States No Party Preference)
 Marty McClendon
 (Prefers Republican Party)
 Douglas Milholland
 (Prefers Green Party)

State Partisan Offices

Legislative District 23
State Representative Position 1
 2-year term
 Sherry V. Appleton
 (Prefers Democratic Party)
 Scott Henden
 (Prefers Republican Party)

Legislative District 23
State Representative Position 2
 2-year term
 James M. Olsen
 (Prefers Grand Old Party)
 Drew Hansen
 (Prefers Democratic Party)

Legislative District 26
State Senator
 4-year term
 Judy Arbogast
 (Prefers Democratic Party)
 Jan Angel
 (Prefers Republican Party)

Legislative District 26
State Representative Position 1
 Short and full 2-year term
 Bill Scheidler
 (Prefers Republican Party)
 Jesse Young
 (Prefers Republican Party)
 Nathan Schlicher
 (Prefers Democratic Party)

Legislative District 26
State Representative Position 2
 2-year term
 Michelle Caldier
 (Prefers Republican Party)
 Larry Seaquist
 (Prefers Democratic Party)

State Partisan Offices

Legislative District 35
State Senator
 4-year term
 Irene Bowling
 (Prefers Democratic Party)
 Travis Couture
 (Prefers Republican Party)
 Tim Sheldon
 (Prefers Democratic Party)

Legislative District 35
State Representative Position 1
 2-year term
 Kathy Haigh
 (Prefers Democratic Party)
 Dan Griffey
 (Prefers Republican Party)
 Josiah Rowell
 (Prefers Republican Party)

Legislative District 35
State Representative Position 2
 2-year term
 Drew C. MacEwen
 (Prefers Republican Party)
 Tammey Newton
 (Prefers Democratic Party)

County Partisan Offices

Kitsap County
Commissioner District 3
 Short and full 4-year term
 Edward E. Wolfe
 (Prefers Republican Party)
 Linda Streissguth
 (Prefers Democratic Party)

Kitsap County Assessor
 4-year term
 Paul Andrews
 (Prefers Democratic Party)
 Phil Cook
 (Prefers Republican Party)
 Garry Sobeck
 (Prefers Democratic Party)
 W. Sean Smith
 (Prefers Republican Party)

Kitsap County Auditor
 4-year term
 Dolores Gilmore
 (Prefers Democratic Party)
 Kelly Emerson
 (Prefers Republican Party)

Kitsap County Clerk
 4-year term
 Gerald (Gary) Chaney
 (Prefers Republican Party)
 Dave Peterson
 (Prefers Democratic Party)

County Partisan Offices

Kitsap County Coroner
 4-year term
 Jeff Wallis
 (States No Party Preference)
 Greg Sandstrom
 (Prefers Republican Party)

Kitsap County Prosecuting Attorney
 4-year term
 Russ Hauge
 (Prefers Democratic Party)
 Bob Scales
 (Prefers Democratic Party)
 Tina Robinson
 (Prefers Republican Party)
 Bruce Danielson
 (Prefers Independent Party)

Kitsap County Sheriff
 4-year term
 Gary L. Simpson
 (Prefers Democratic Party)

Kitsap County Treasurer
 4-year term
 Meredith R. Green
 (Prefers Democratic Party)

Local Measure

City of Bremerton
Proposition No. 1
Emergency Medical Care and Services Tax
 Shall the City of Bremerton, be authorized to continue its emergency medical services property tax levy at fifty cents (\$.50) or less per One Thousand Dollars (\$1,000.00) of assessed valuation for each year for six (6) consecutive years commencing in 2015?
 Yes
 No

Election of Political Party Precinct Committee Officer

For this office only: In order to vote for precinct committee officer, a partisan office, you must affirm that you are a Democrat or a Republican and may vote only for one candidate from the party you select. Your vote for a candidate affirms your affiliation with the same party as the candidate. This preference is private and will not be matched to your name or shared.

Precinct Committee Officer
 2-year term